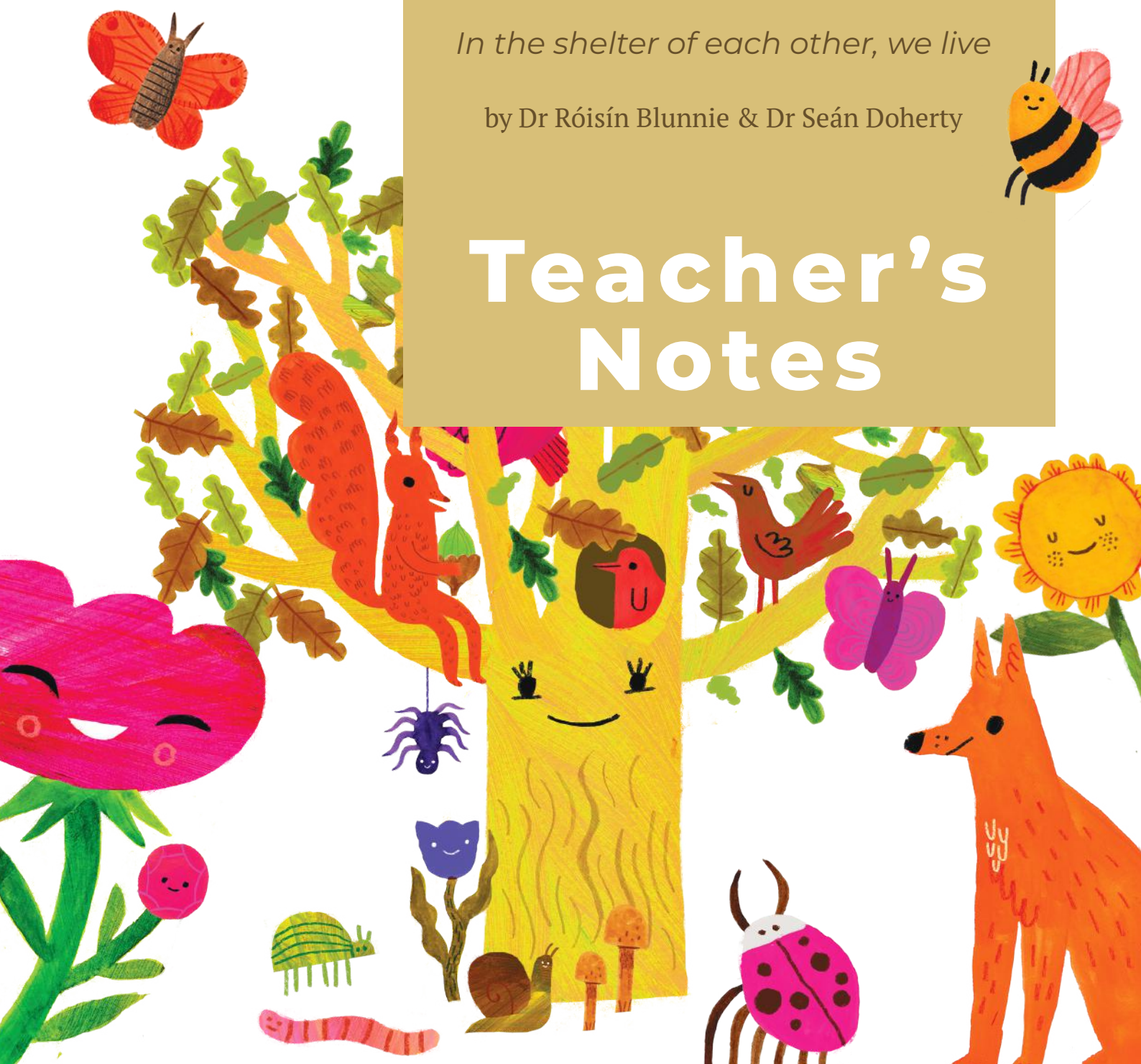


Ar scáth a chéile a mhaireann na daoine

In the shelter of each other, we live

by Dr Róisín Blunnie & Dr Seán Doherty

Teacher's Notes



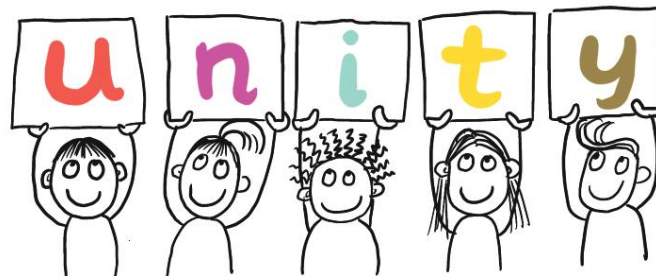
in partnership with

Ar scáth a chéile a mhaireann na daoine

The seanfhocal

This seanfhocal is all about the sense of connection between people, both close together and far apart: in schools, in communities, in villages, towns, cities, countries, and all over the world. In the shelter of each other, we live: we communicate, we interact, we survive, we endure, we continue.

We are all connected. Our actions impact others, and others' actions impact us.



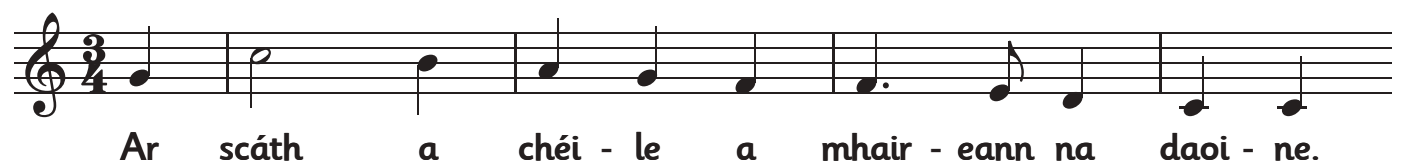
The music

Responding to this idea of the connection of humanity, the choral piece explores concepts such as reflection, balance, mirroring, leading, following, overlapping, influencing, learning, unity, and diversity. Every musical detail in the piece represents the broad concept of connection.

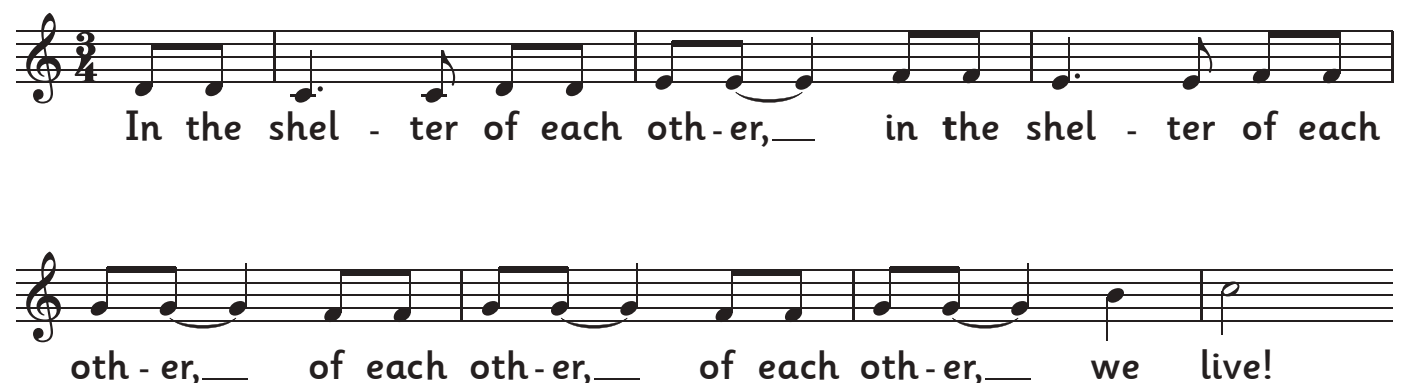
The piece is built entirely from two themes that we sing: one uses the seanfhocal in Irish, and one uses the translation in English. Both begin with upbeats.

Here are the themes used in the piece.

Theme 1 ('Ar Scáth' theme)



Theme 2 ('Shelter' theme)



Tonic solfa



Here are the same themes, shown here with tonic solfa:

Theme 1 ('Ar Scáth' theme)

s d t l s f f m r d d

Theme 2 ('Shelter' theme)

r r d d r r m m f f m m f f
s s f f s s f f s s t d

After an initial leap upwards, theme 1 has a descending shape, travelling a distance of an octave from the highest note C down to the lowest note C.

After an initial step downwards, theme 2 has an ascending shape, overall travelling a distance of an octave from the lowest note C to the highest note C.

Brass theme

There is also a theme that occurs in the orchestral accompaniment. It is played by brass instruments. We can hear this at the beginning and at several points throughout the piece. Here are the themes used in the piece.

Brass theme, part 1

d r m d r m s f m r d m d r

Brass theme, part 2

s f m s f m d r m f s m f r

Part 1 and Part 2 of the brass theme are closely related, being almost in mirror image (inversion).

Outline of the Piece

While the piece is notated for 8 voice parts, its structure is simple and it is constructed entirely from the themes above. Follow the analysis below in the Conductor's Score.

bb. = bars.

- bb. 1-12** Introduction; played by the orchestra
- bb. 5-12** Brass theme
- bb. 13-16** 'Ar Scáth' theme, unison
- bb. 17-23** 'Ar Scáth' theme, 4-part imitation, canon at one bar
- bb. 21-28** Brass theme; interlude
- bb. 29-35** 'Shelter' theme, unison
- bb. 36-45** 'Shelter' theme, 4-part imitation, canon at one bar
- bb. 45-52** Brass theme; interlude
- bb. 53-60** 'Ar Scáth' theme (x 2) and 'Shelter' theme, superimposed
- bb. 61-72** 'Ar Scáth' theme (x 2) and 'Shelter' theme, superimposed, each in 4-part imitation, then repeating 'we live' until all parts complete
- bb. 73-80** 'Ar Scáth' theme (x 2) and 'Shelter' theme, superimposed; fortissimo.
- bb. 80-93** 'We live' repeated on unison note C; diminuendo.



Learning Resources

Powerpoint listening activity

Use the Listening Activity in the resource pack for this piece to explore the musical features in detail by following the audio-focused questions.

YOUTH SING **Excerpt 3**

Listen to the excerpt and sing along with the brass melodies using the solfa syllables **do, re, mi, fa, and so.**

do r m d r m s f m r d m d r

s f m s f m d r m f s m f r

Colouring page

Distribute the colouring page for pupils to complete in class or at home.





Ar scáth a chéile
a mhaireann
na daoine